

**Club Med** Ψ

France

**Valmorel**

**Everything you need to  
know**



◆ With Luxury Space

# The Best Reasons To Go



## Traditional alpine charm

### You are here

Nearby the Resort, the village of Valmorel's enchanting stone and wood chalets, pedestrian streets and quaint shops beckon

## Gentle, sunny slopes

### Activities

Ideal for the whole family, enjoy the pleasure of skiing and snowshoeing on the gentle tree-lined slopes of Grand Domaine



## Time to bond

### Family fun

Create memories together at the lively family tea-time fun fair, play in the snow garden or splash at the pool

## Savoy delights

### Cuisine

After a day on the slopes, indulge in regional specialties like Savoyard fondue and tartiflette topped off with blueberry pie



# Summary

<b>Accommodation</b>	<b>4</b>
<b>Luxury Space</b>	<b>10</b>
<b>Sports &amp; Activities**</b>	<b>14</b>
<b>Swimming pools</b>	<b>18</b>
<b>Club Med Spa by Sothys*</b>	<b>19</b>
<b>Children</b>	<b>20</b>
<b>Restaurants &amp; Bars</b>	<b>22</b>
<b>Practical Information</b>	<b>25</b>

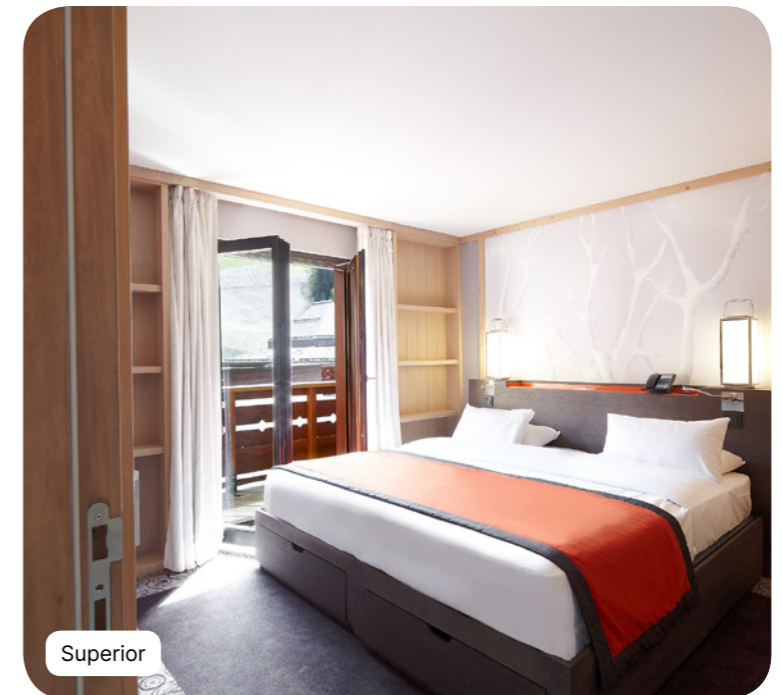
\*On demand (at extra cost)

\*\*Depending on weather conditions

The information in this document is accurate as of its publication date 06/12/2026 but may be subject to change. For the most current and complete information, please contact your agency or visit the Club Med website. All images are for illustrative purposes only and are not legally binding.



# Accommodation



## Superior



Name	Minimum area (sq ft)	Highlights	Capacity
Superior Room - Mobility Accessible, Balcony	258.33	Furnished balcony	1 - 2
Superior Room - Balcony interconnecting with Superior Room	516.67	Furnished balcony	2 - 6
Interconnecting Superior Rooms - Balcony	516.67	Furnished balcony	2 - 6
Superior Room - Balcony	258.33	Furnished balcony	1 - 3
Superior Room	258.33		1 - 3
Superior Room - Mobility Accessible	258.33		1 - 2
Interconnecting Superior Rooms	516.67		4 - 6

### Equipment

- Heating
- Baby bed (on demand)
- Baby welcome pack
- Telephone
- Television(s)
- Internet
- Kettle - Coffee/tea making facilities
- Iron & ironing-board
- Safe deposit box
- Socket type E : 220 - 240 V

### Bathroom

- Twin vanity sinks
- Hair dryer
- Heated towel rail
- Magnifying mirror
- Amenities : shower gel, shampoo, conditioner, body lotion

### Services

- Luggage service
- Laundry service (extra charge)

## Deluxe



Name	Minimum area (sq ft)	Highlights	Capacity
Deluxe Room	312.15	Lounge area, Furnished balcony	1 - 2
Deluxe Room interconnecting with Superior Room - Balcony	516.67	Lounge area, Furnished balcony	2 - 5
Deluxe Room interconnecting with Superior Room	516.67	Lounge area	2 - 5
Interconnecting Deluxe Rooms	624.31	Lounge area, Furnished balcony	4

### Equipment

- Heating
- Baby bed (on demand)
- Baby welcome pack
- Telephone
- Television(s)
- Internet
- Kettle - Coffee/tea making facilities
- Mini fridge (non provisioned)
- Iron & ironing-board
- Safe deposit box
- Socket type E : 220 - 240 V

### Bathroom

- Bathtub
- Twin vanity sinks
- Separate toilets
- Bathrobe
- Hair dryer
- Heated towel rail
- Magnifying mirror
- Amenities : shower gel, shampoo, conditioner, body lotion
- Amenities accessories : vanity kit, manicure kit, etc.

### Services

- Luggage service
- Laundry service (extra charge)
- Pool towel

◆ **Luxury Space**

Enjoy a unique and intimate experience in the Exclusive Collection Space.



**Your Exclusive Collection Services**



Luxury Suites



Room service for breakfast



Exclusive Lounge Bar



Dedicated Conciergerie



Private ski room



Privileged access to all the Resort

**Le Lodge Exclusive Collection Lounge Bar**



Reserved for guests of the Exclusive Collection Space, the Lodge exudes the refined elegance of an English club. Experience elevated service with inspired cocktails, canapés, and sunset champagne, all enjoyed by the comforting warmth of the fireplace.

## Exclusive Collection Space

Name	Minimum area (sq ft)	Highlights	Capacity
Exclusive Collection Space, Family Suite	538.2	Separate Living Room, Children's Separate Room, Furnished balcony	1 - 4
Exclusive Collection Space, Suite	559.72	Separate Living Room, Furnished balcony	1 - 2
Exclusive Collection Space, Suite - Mobility Accessible	322.92	Lounge area, Furnished balcony	1 - 2

### Equipments

- Heating
- Baby bed (on demand)
- Baby welcome pack
- Television(s)
- Telephone
- Sofa
- Internet
- Espresso machine
- Kettle - Coffee/tea making facilities
- Iron & ironing-board
- Safe deposit box
- Ski locker with shoe dryer
- Socket type E : 220 - 240 V

### Bathroom

- Shower
- Bathrobe
- Slippers
- Hair dryer
- Heated towel rail
- Magnifying mirror
- Amenities accessories : vanity kit, manicure kit, etc.
- Spa Brand Amenities : shower gel, shampoo, conditioner, body lotion

### Services

- Lunch offered if early arrival (prior to 3.00pm)
- Room Service included for continental breakfast
- Private bar and snacking at the conciergerie
- Concierge service
- Turndown Service
- Luggage service
- Cleaning service at a time of your choosing
- Laundry service (extra charge)
- Priority booking at the Club Med Spa
- Private space in ski room
- Pool towel
- Room service (at extra cost) from 11 a.m to 10 p.m
- Minibar (non-alcoholic drinks) - refilled daily
- Preferential transfer for G.M® with transport package
- Champagne served by the glass at 6pm in the Exclusive Collection Lounge Bar
- Priority Booking at the Gourmet Club

# Sports & Activities\*\*



## Winter Sports

	Group lessons	Free access	At extra cost class	Min. age (years)
Ski	All levels / Advanced			3 years old
Snowboard	All levels			8 years old
Snowshoe hikes	All levels			
Activities proposed in the resort*			✓	

\*On demand (at extra cost)  
 \*\*Depending on weather conditions



## Land Sports & Leisure

	Group lessons	Free access	At extra cost class	Min. age (years)
Fitness	All levels			16 years old
Entertainment		✓		
Cardio Training	Free access			16 years old
Swimming Pools	All levels			5 years old

\*On demand (at extra cost)  
 \*\*Depending on weather conditions

# Swimming pools

## Indoor swimming pool

Indoor pool



Enjoy some relaxing moments in this 120 m<sup>2</sup> (1,300 ft<sup>2</sup>) pool, and 15 m<sup>2</sup> (160 ft<sup>2</sup>) children's paddling pool.

Children are under the supervision of their parents or an accompanying adult.

**Depth (min./max.): 2.624672m / 4.593176m**  
**Heated**

# Club Med Spa by Sothys\*



Sothys, the goddess of beauty confides her secret to both men and women. In the heart of the Corrèze region of France, a cutting-edge aesthetic is constantly renewed in the botanical garden. Discover digi-esthétique®, an exclusive massage method offering a magical escape from everyday routine. Emotions and refinement await you.



\*On demand (at extra cost)

# Children



## Children's Clubs

Age	Name	Included Activities	By request at an extra charge	Dates available
0 to 2 years	Baby Club Med®*	Walks, Early learning, Creative workshops		Always
2 to 3 years	Petit Club Med®*	Evening, Walks, Early learning, Creative workshops, Show time	"Learning to ski and the pleasures of snow" course	Always
4 to 10 years	Mini Club Med +	ESF group ski lessons for Kids, ESF group snowboard lessons for Kids & Teens, Evening, Show time, New fun activities		Always
11 to 13 years	Teens Club Med	New activities, ESF group ski lessons for Teens, ESF group snowboard lessons for Kids & Teens, Team Rider, Show time		Always
14 to 17 years	Club Med Chill Pass	New activities, ESF group ski lessons for Teens, ESF group snowboard lessons for Kids & Teens, Team Rider, Show time		Always

## Children's activities

Age	Included Activities	By request at an extra charge
0 to 2 years	Family "Big Snack"	
2 to 3 years	Club Med Amazing Family!, Family show time, Family "Big Snack"	
4 to 10 years	Club Med Amazing Family!, Family show time, Family "Big Snack"	
11 to 13 years	Club Med Amazing Family!, Family show time, Snowshoes, Family "Big Snack"	Family Spa
14 to 17 years	Club Med Amazing Family!, Family show time, Snowshoes, Family "Big Snack"	Family Spa

\*On demand (at extra cost)

## Restaurants & Bars



### Bars

#### Main bar

Le Roc Bar

#### Gourmet Club Bar

La Laiterie Bar

#### Exclusive Collection Bar

Le Lodge Exclusive Collection  
Lounge Bar

## Restaurants



### Main Restaurant

The Cerfs and The Céleste

Typical Alpine favourites star alongside an array of international dishes on the menu. Delight in raclette, sizzling grills, and artisan desserts, all enjoyed on the scenic terrace or in a decor that artfully reinterprets the seasons.

### Gourmet Club

La Laiterie

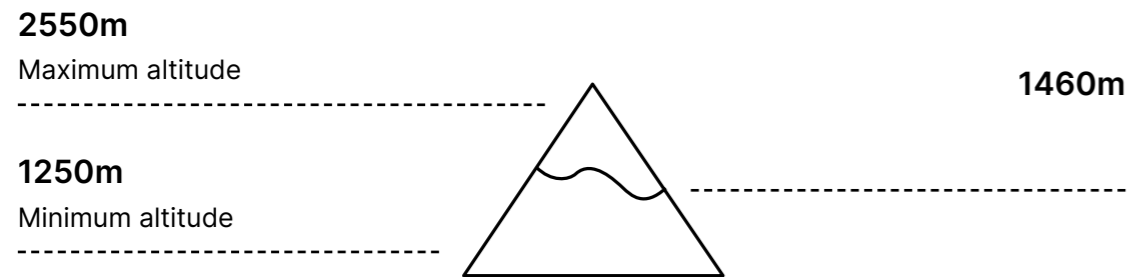
Dine in a charming ambiance featuring regional specialties made with the finest artisan produce. Paired with a glass of local Savoie wine, sample the alpine-style tapas or the creamy Savoyard fondue for two, a signature dish of the region. This summer, La Laiterie transforms itself into a quiet area during the day and later a place to enjoy sunset aperitif or fondue evenings.



## Ski area map



## Valmorel Grand Domaine



Alpine ski slopes

### Number of ski slopes



Cross-country ski slopes

60 km

Freeride Zone(s)



Fun Zone(s)



## Practical Information

### Address

**CLUB MED VALMOREL**  
Hameau du Bois de la Croix, Valmorel - Les Avanchers, Savoie - Valmorel  
73260, FRANCE

No minimum age

### Facilitate Your Arrival

Easy Arrival service\*  
Register & manage your details online, we will have everything ready for your arrival :  
Easy Check in – check out  
Ski and snowboard equipment details  
Ski lesson registration  
Children's club enrolment  
Club Med online Account  
Available on your Member Space  
\*Selection of services according to Resorts

### Check-in/Check-out

Check-in: between 4pm and 8pm  
Check-out: rooms to be vacated by 10am for departures before 3pm  
In case of early arrival: lunch available (at an additional cost) depending on restaurant opening hours  
For short stays of 2 or 3 nights – weekend by Club Med  
Arrival: between 12pm and 8pm, with rooms available from 4pm to 6pm  
Departure: check out by 10am for departure before 3pm

### Nearest arrival points

➔ Grenoble Alpes Isère Airport (150 min.) ; Lyon St Exupery airport (150 min.) ; Chambéry-Vograns airport (80 min.) ; Geneva-Cointrin airport (180 min.)  
🚆 Moûtiers Salins Brides-Les-Bains railway station (45 min.) ; Chambéry railway station (75 min.) ; Lyon Part-Dieu railway station (150 min.)

### My Club Med App

My Club Med App : All you need is My Club Med App - your ideal travel companion to prepare and organize your stay. Discover the Resort map, facilities and activities, and enjoy dedicated services to make the most of your stay.  
Download My Club Med App on the App Store or Google Play.