



**Club Med  $\Psi$**

Switzerland

# **Saint-Moritz Roi Soleil**

**Everything you need to  
know**



# The Best Reasons To Go



## Timeless Alpine chic

### You are here

Nestled in Engadine Valley, St. Moritz exudes alpine charm and chic with its palaces, high-end boutiques, and art galleries



## Cross-country skiing

### Activities

Discover The Engadins unique cross-country ski experience, with 240 km of trails through spectacular forests and lakes



## Lunch on the slopes

### Atmosphere

Take a break and fuel up with superb views at one of the Resort's high-altitude restaurants and relish a full day on the slopes



## Nature's sanctuary

### Nature

Rejuvenate in a sunny, preserved natural setting of sparkling lakes, majestic mountains and fresh alpine air

# Summary

<b>Accommodation</b>	<b>4</b>
<b>Sports &amp; Activities**</b>	<b>6</b>
<b>Swimming pools</b>	<b>10</b>
<b>Children</b>	<b>12</b>
<b>Restaurants &amp; Bars</b>	<b>14</b>
<b>Practical Information</b>	<b>17</b>

\*On demand (at extra cost)

\*\*Depending on weather conditions

The information in this document is accurate as of its publication date 06/12/2026 but may be subject to change. For the most current and complete information, please contact your agency or visit the Club Med website. All images are for illustrative purposes only and are not legally binding.



# Accommodation

## Superior



Name	Minimum area (sq ft)	Highlights	Capacity
Superior Room - Mountain View	236.81	Mountain view	1 - 3
Superior Room	236.81		1 - 4
Family Superior Room	365.97	Children's Separate Room	3 - 4
Junior Room - Single, shared Bathroom	96.88		1

### Equipment

- Heating
- Telephone
- Television(s)
- Internet
- Safe deposit box
- Socket type E : 220 - 240 V

### Bathroom

- Shower
- Amenities : shower gel, shampoo, conditioner, body lotion

### Services

- Luggage service
- Laundry service (extra charge)

# Sports & Activities\*\*



## Winter Sports

	Group lessons	Free access	At extra cost class	Min. age (years)
Ski	Lessons for all levels (French / English / German / Italian) / Advanced			4 years old
Snowboard	All levels			8 years old
Cross country ski	Lessons for all levels (French / English / German / Italian)			12 years old
Snowshoe hikes	All levels			12 years old
Activities in the Resort*			✓	

\*On demand (at extra cost)  
 \*\*Depending on weather conditions



## Land Sports & Leisure

	Group lessons	Free access	At extra cost class	Min. age (years)
Fitness	All levels			16 years old
Cardio Training		Free access		16 years old
Swimming Pool	All levels			16 years old
Entertainment		✓		

\*On demand (at extra cost)  
\*\*Depending on weather conditions

# Swimming pools

## Indoor swimming pool

Indoor pool



Freshwater overflow pool equipped with teak deckchairs.

Children are under the supervision of their parents or an accompanying adult.

**Heated**



# Children



## Children's Clubs

Age	Name	Included Activities	By request at an extra charge	Dates available
4 to 10 years	Mini Club Med +	ESS group ski lessons for kids, ESS group snowboard lessons for Kids & Teens, Evening, Show time, New fun activities		Always
11 to 13 years	Teens Club Med	New activities, ESS group ski lessons for teens, ESS group snowboard lessons for Kids & Teens, Cross country skiing group lessons by ESS instructors, Team Rider, Show time		Always
14 to 17 years	Club Med Chill Pass	New activities, ESS group ski lessons for teens, ESS group snowboard lessons for Kids & Teens, Cross country skiing group lessons by ESS instructors, Team Rider, Show time		Always

## Children's activities

Age	Included Activities	By request at an extra charge
4 to 10 years	Family show time, Family "Big Snack", Family tournaments & games	
11 to 13 years	Family show time, Snowshoes, Family "Big Snack", Family tournaments & games	
14 to 17 years	Family show time, Snowshoes, Family "Big Snack", Family tournaments & games	

\*On demand (at extra cost)

# Restaurants & Bars



## Bars

### Main bar

Main bar

### Night-Club Bar

The Nightclub bar

# Restaurants

## Main Restaurant

The Grischa



Typical Alpine favourites star alongside an array of international dishes in the mountain-inspired ambiance of The Grischa. Start your day with a made-to-order omelette, then sample à la minute grills and artisan desserts, all a splendid view across Saint Moritz.

For young children, high chairs and booster seats are available upon request.

## Mountain Restaurant

Corvatsch

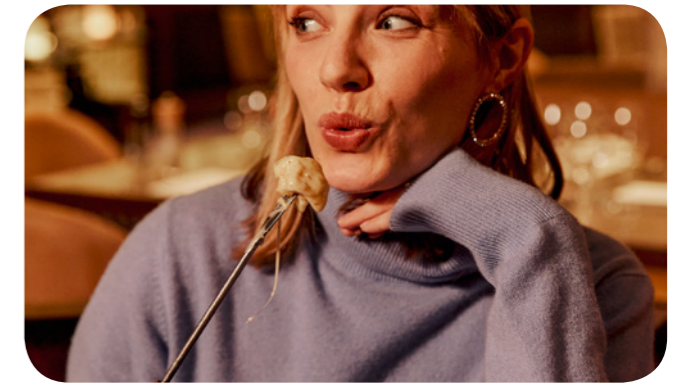


Closed from 14 to 28 March 2027

Take a break from a morning of skiing at Corvatsch and enjoy panoramic mountain views. Savor a lunch before heading back to the slopes. This restaurant is also accessible to non-skiers who simply want to enjoy the stunning scenery.

## Specialty Restaurant

The Stubli



Dine in a charming ambiance featuring regional specialties made with the finest artisanal produce. Paired with a glass of wine, indulge in a comforting fondue or swiss raclette, signature dishes of the region.

## Mountain Restaurant

The Corviglia



Closed from 21 to 28 March 2027

Perched at a breathtaking 2,550 metres, The Corviglia is a high-altitude haven for both skiers and gourmands. Warm up with mountain specialties and take in the stunning views of the Corvatsch Valley.

## Ski area map



## Domaines de la Haute-Engadine

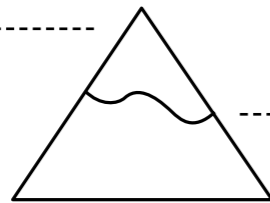
**3300m**

Maximum altitude

**1750m**

**1750m**

Minimum altitude



Alpine ski slopes

### Number of ski slopes



Cross-country ski slopes

**222 km**

Freeride Zone(s)



Fun Zone(s)



## Practical Information

### Address

**CLUB MED SAINT-MORITZ ROI SOLEIL**  
21 Via Tegiatscha, Saint-Moritz Bad, Canton des Grisons  
7500, SWITZERLAND

No minimum age

### Facilitate Your Arrival

Easy Arrival service\*  
Register & manage your details online, we will have everything ready for your arrival :  
Easy Check in – check out  
Ski and snowboard equipment details  
Ski lesson registration  
Children's club enrolment  
Club Med online Account  
Available on your Member Space  
\*Selection of services according to Resorts

### Check-in/Check-out

Check-in: between 4pm and 8pm  
Check-out: rooms to be vacated by 10am for departures before 3pm  
In case of early arrival: lunch available (at an additional cost) depending on restaurant opening hours  
For short stays of 2 or 3 nights – weekend by Club Med  
Arrival: between 12pm and 8pm, with rooms available from 4pm to 6pm  
Departure: check out by 10am for departure before 3pm

### Nearest arrival points

✈ Zurich airport (180 min.) ; Munich airport (240 min.) ; Milano-Malpensa airport (180 min.)  
🚆 St Moritz railway station (10 min.) ; Chur (Coire) railway station (90 min.) ; Zurich railway station (180 min.)